

ATTENDANCE MATTERS!



WHY IS SCHOOL ATTENDANCE IMPORTANT?

Regular attendance at school ensures that children get the best possible start in life.

Good attendance supports learning, the development of social skills and friendships, as well as building good habits that are essential for adult life.

School education lays the vital foundations of a child's life.

Research clearly demonstrates the link between regular attendance and educational progress and attainment.

The law entitles every child of compulsory school age to an efficient, full-time education. It is the legal responsibility of every parent to make sure their child receives that education by attendance at school or by education otherwise than at school, they have an additional legal duty to ensure their child attends that school regularly.

At Courthouse the school day starts at 8.50am and ends at 3.20pm. Children must arrive in school by 8.50am on each school day.

The register will be kept open until 9am.

Between 9am and 9.10am, children will be marked late (L). After 9.10am children will be marked 'late after the register has been closed' (U).

MISSED DAYS ADD UP!

An attendance figure of 90% is the equivalent of a half day absence every week.

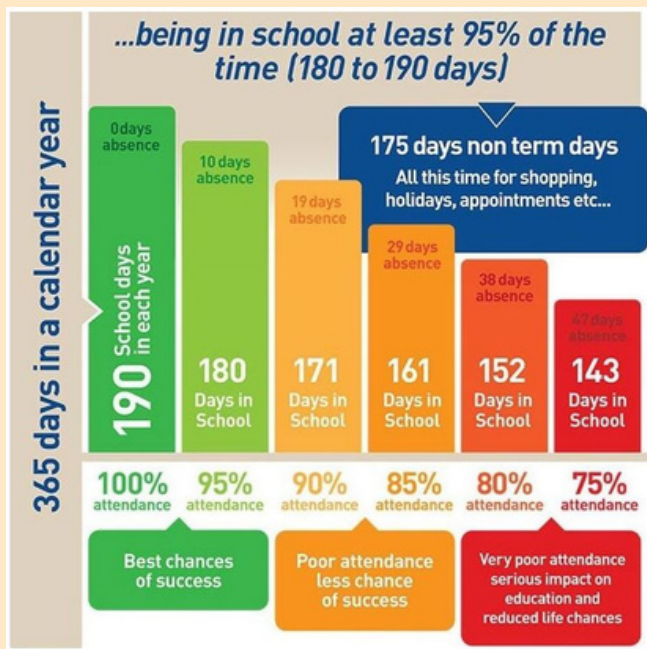
At Courthouse we expect all our pupils to attend school for at least 97% of the school year.

If your child's level of attendance falls below 95%, you will be contacted by the school to look at what support can be offered.

Attendance that falls below 90% is classed as persistent absence.

Every day at school counts. Absences lead to gaps in children's education that can seriously affect their academic progress and attainment.





HOW CAN YOU SUPPORT GOOD ATTENDANCE AT HOME?

- Take trips during the school holidays
- Arrive at school on time, by 8.50am
- Talk to your child - if they don't want to come to school as why - we can help
- Establish a good routine - establish healthy sleeping habits
- Make medical appointments out of school time
- Attend parents' evenings
- Actively engage in school events

PEOPLE WHO CAN HELP



Mrs Hayes
Head of School - responsible for attendance and authorising any absences



Mrs Compton
Attendance Officer



Miss Pena
SENDCo

